
HORN SPEAKER

CH-510/522/530/532



Horn Speaker

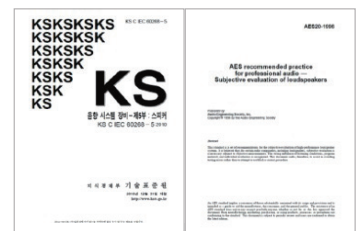
CH-510/522/530/532



Korea standard speaker (KS standard)

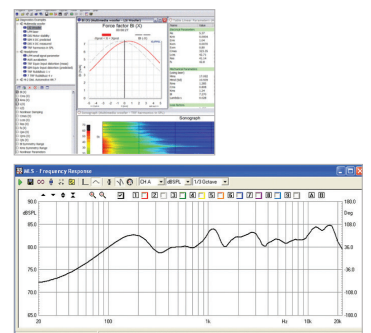


Inter-M acquired a KS certification for speaker system as the first's Korea speaker system manufacturer. The relevant certification is given to the factory of Korea speaker system manufacturer. It ensures KS standard observance for all speakers in the certification items manufactured at the relevant facilities. Furthermore, Inter-M speaker provides the durability and reliable quality to user by adding the AES, CEA standard used in the domestic, international market to test list apart from KS standard.



Thorough quality control

The only products passing a 5 test including a frequency response, harmonics, lumbers are assigned with 'PASS' to provide a stable and equal quality in the market. The relevant test is proceeded through the automation equipment and support the exact verification about the products.



Horn Speaker

Recommended Use Range

SERIES	Model	F - R	10M	20M	25M	30M	35M	40M	45M	50M
CH	CH-522	100Hz-20kHz	CH-522							
	CH-532	77Hz-20kHz	CH-532							
	CH-510	140Hz-12kHz								
	CH-530	110Hz-18kHz								

Waterproof and Damp-proof Outdoor Speaker

The Horn Speaker offers the perfect performance not only indoor but outdoor. It is over IP-65 waterproof rated and EN-54-24(European standard of voice alert alarm for fire emergency) of 4.4.3 IP class.



Matching of Speaker and Amplifier



20W x 15



600W

Previous PA System is composed of speakers for emergency broadcasting and announcement. On the other hand, recent PA System has high demand in not only speaker announcements but BGM as well. In order to meet the needs of the customer, Inter-M has launched a speaker line with much higher amplifier output.



Horn Speaker

CH-522/532



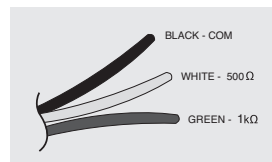
CH Series Horn Speaker provides high sound pressure, high directivity and sturdiness as made with synthetic resins.

It can adjust pointing angle of up-and-down 130°, left-to-right 135° and is easy to install on the wall or ceiling.

FEATURES

- Indoor or outdoor use
- Coaxial-type 2-way system
- Wide frequency range with Remarkable vocal clarity
- Excellent for public address systems
- Easy installation
- Dispersion control

● Cable connection



Model		CH-522	CH-532
Type		4" Full-Range Horn Speaker	4" Full-Range Horn Speaker
Driver		4"	4"
Power Handling (AES)		20W	30W
Input Power	100V	20/10W	30/15W
Impedance	100V	500/1kΩ	333/666Ω
Frequency Response(-10dB)		124Hz ~ 15.4kHz	139Hz ~ 20kHz
Frequency Range(-20%)		100Hz ~ 20kHz	77Hz ~ 20kHz
Sensitivity (1W/1m, 1kHz) ^{*1}		95dB	95dB
Maximum SPL[Cont] ^{*1}		108dB	110dB
Nominal Dispersion(HxV)	1kHz	112° x 202°	122° x 208°
	4kHz	52° x 52°	52° x 52°
Input connection		Bi-Wired	Bi-Wired
Enclosure Material		ABS UL 94 HB	ABS UL 94 (HB)
Enclosure Color (Front)		Ivory	Ivory
Grille Material		Metal Grille	Metal Grille
Grille Color		Black	Black
Weights (Net)		3.24kg	3.24kg
Dimensions (Net, WxHxD, mm)		263 x 149 x 326	263 x 149 x 326
Weather Resistant		IP54	IP54
Flame Resistant		-	-
Certification		CE	CE
Included Accessories		NUT M10 NI, WASHER PLATE, ASS.Y BOLT 2EA Each + Bracket, Base	NUT M10 NI, WASHER PLATE, ASS.Y BOLT 2EA Each + Bracket, Base

*1: At floor test

CH-510/530

Horn Speaker



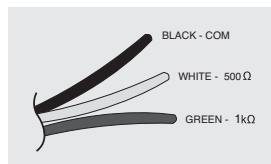
CH Series Horn Speaker provides high sound pressure, high directivity and sturdiness as made with synthetic resins.

It can adjust pointing angle of up-and-down 130°, left-to-right 135° and is easy to install on the wall or ceiling.

FEATURES

- Indoor or outdoor use
- Coaxial-type 2-way system
- Wide frequency range with Remarkable vocal clarity
- Excellent for public address systems
- Easy installation
- Dispersion control

● Cable connection



Model		CH-510	CH-530
Type		4" Full-Range Horn Speaker	4" Full-Range Horn Speaker
Driver		4"	4"
Power Handling (AES)		10W	30W
Input Power	100V	10/5W	30/15W
Impedance	100V	2k/1kΩ	333/666Ω
Frequency Response(-10dB)		—	—
Frequency Range(-20%)		140Hz ~ 12kHz	110Hz ~ 18kHz
Sensitivity (1W/1m, 1kHz) ^{*1}		95dB	95dB
Maximum SPL[Cont.] ^{*1}		105dB	110dB
Nominal Dispersion(HxV)	1kHz	100° x 100°	100° x 100°
	4kHz	—	—
Input connection		INPUT Line Direct Connection	INPUT Line Direct Connection
Enclosure Material		ABS UL 94 (HB)	ABS UL 94 (HB)
Enclosure Color (Front)		Ivory	Ivory
Grille Material		Metal Grille	Metal Grille
Grille Color		Black	Black
Weights (Net)		3.3kg	3.4kg
Dimensions (Net, WxHxD, mm)		294 x 209 x 320	294 x 209 x 320
Weather Resistant		IP54	IP54
Flame Resistant		—	—
Certification		CE	CE
Included Accessories		NUT M10 NI, WASHER PLATE, ASS.Y BOLT 2EA Each + Bracket, Base	NUT M10 NI, WASHER PLATE, ASS.Y BOLT 2EA Each + Bracket, Base

*1 : At floor test



Inter-M Corp. (IMK)

719, Dobong-ro, Dobong-gu, Seoul, Korea
Overseas Sales Team

Tel_ +82-2-2289-8141~7 Fax_ +82-2-2289-8149 E-mail_ overseas@inter-m.com

www.inter-m.com

* Design and specification are subject to be changed for the improvement of product quality without pre notice.

2019. 1. V4